

7495

4395

MARINE DOCK SYSTEMS
POLYETHYLENE FLOTATION
MODULES, TYP.
7x900L, 2x1200L

DINGHY DRY
DOCK,
1x550L FLOTATION
MODULE

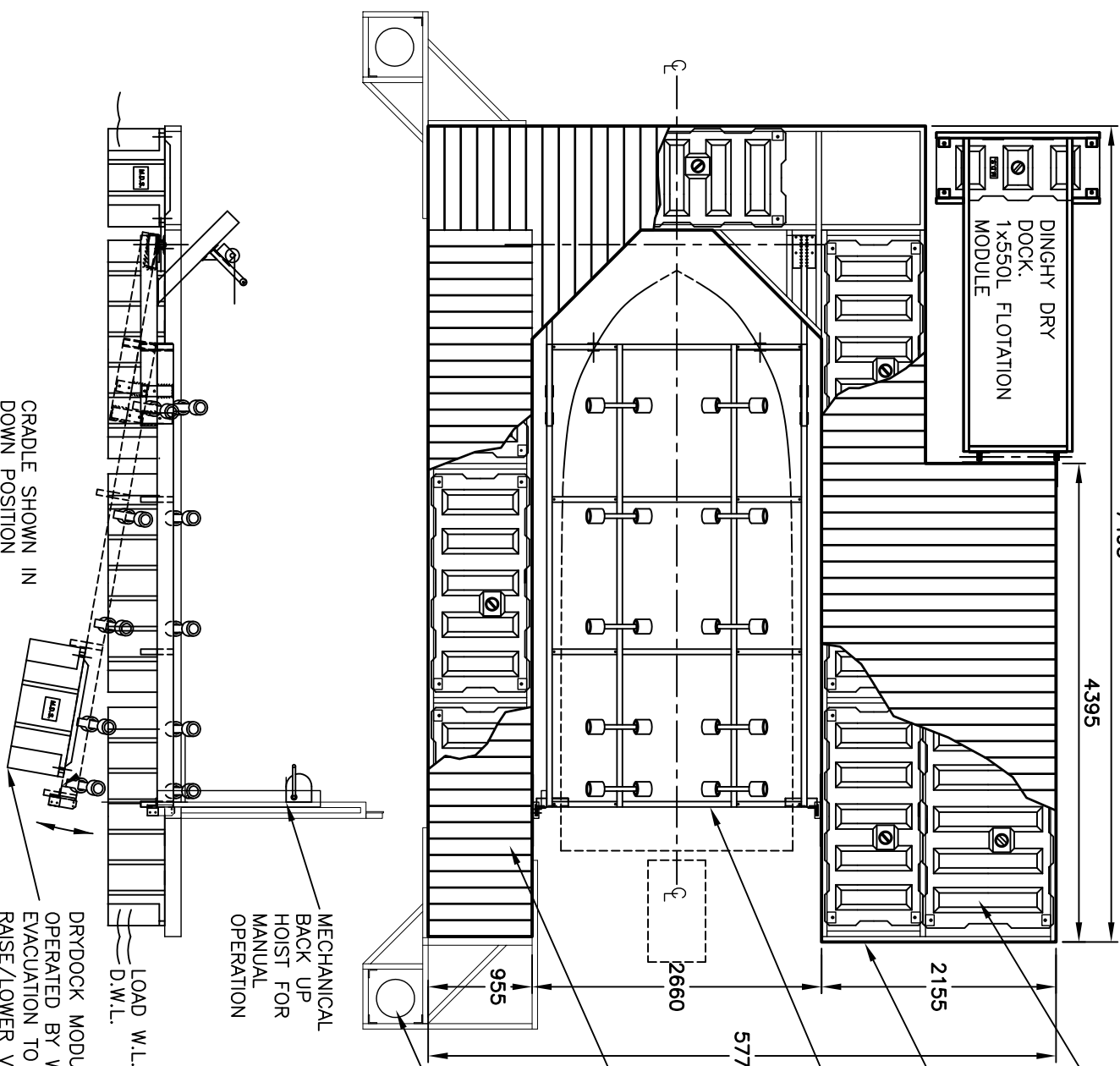
2155
ALUMINIUM FRAME
150x50 RHS TYP.

5770
CENTRE DRYDOCK
BERTH.

2660
DECKING
KILN DRIED F27
HARDWOOD.

955
KOPPERS DOUBLE TREATED MARINE
PILES AT 8.8M CENTRES FOR
PONTON LOCATING AND TO SUIT
POST FERRY REQUIREMENTS FOR
FENDERING AND MINIMUM DRAFT
OF 1900mm.

BOAT IS RAISED OUT
OF THE WATER

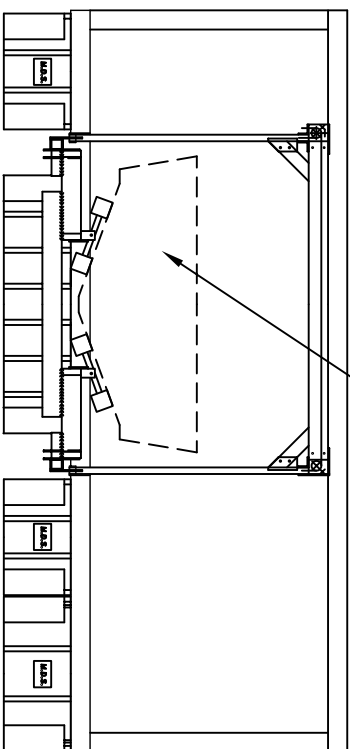


CRADLE SHOWN IN
DOWN POSITION

MECHANICAL
BACK UP
HOIST FOR
MANUAL
OPERATION

LOAD W.L.
D.W.L.
DRYDOCK MODULE: 1200L
OPERATED BY WATER/AIR
EVACUATION TO
RAISE/LOWER VESSEL

CRADLE SHOWN IN
UP POSITION



DO NOT SCALE

NOTE:
 -ALL STRUCTURE IS FULLY WELDED
 WITH A NOMINAL FILLET OF 5mm
 -ALL EXTRUSIONS ARE OF GRADE
 6063-T5 OR EQUIVALENT.
 -FILLER ALLOY IS GRADE 5356
 -ALL TIMBER IS TO BE TREATED WITH
 A SUITABLE PRESERVATIVE.
 (GROFOSOTE, DECKING OIL ETC)
 -ALL FASTENERS ARE CORROSION
 RESISTANT STAINLESS STEEL.
 -ALL EXPOSED BOLTS ARE TO BE
 RECESSED INTO THE TIMBER BY
 COUNTER BORING.
 -ALL BOLT THREADS ARE TO BE
 TREATED WITH ANTI-SIEZE OR
 EQUIVALENT LUBRICATING COMPOUND,
 PRIOR TO FASTENING.
 -PONTON IS DESIGNED IN
 ACCORDANCE WITH AS3962

MARINE DOCK SYSTEMS

PTY LTD

M & N SAUNDERSON
LOT 9 MOUNTAIN VIEW ESTATE
BAR POINT, HAWKESBURY RIVER

GENERAL ARRANGEMENT OF
POST FERRY STOP PONTON
WITH DRY DOCK



SCALE	N.T.S.	DRAWING No.	
DRAWN	BJM	A4-930	
DATE	X	REV	A