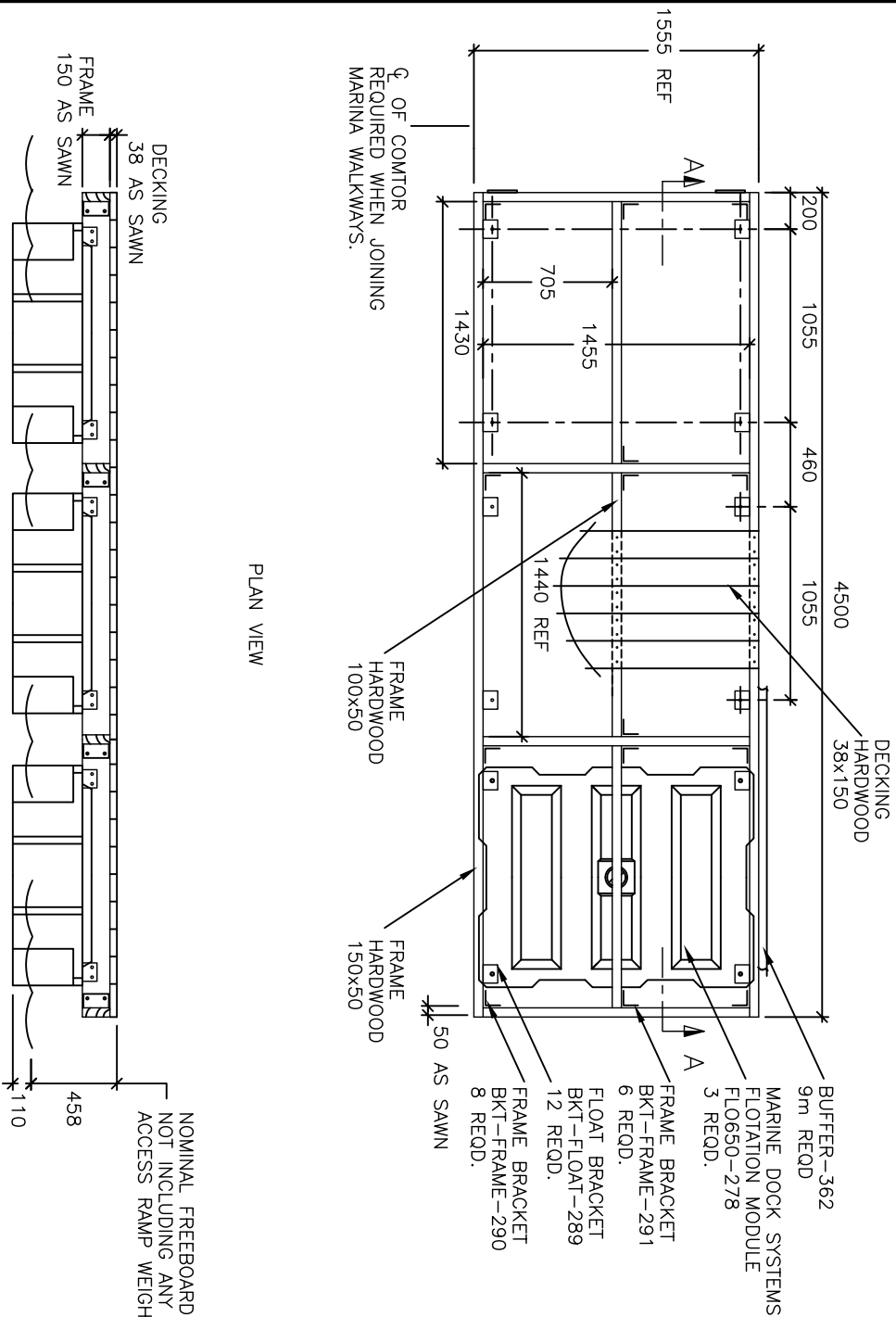


COPYRIGHT ALL RIGHTS RESERVED

DO NOT SCALE



FOR ADDITIONAL ASSEMBLY DETAILS, REFER TO THE FOLLOWING DRAWINGS:

- FRAME BKT - A4-736
- FRAME BKT - A4-739
- FLOAT AND DECK - A4-730
- CLEAT ASSEM - A4-717
- BUFFER ASSEM - A4-740
- COMTOR - A4-743

FASTENERS REQUIRED.		
PART No.	ITEM	QTY. REQD.
737	3/8" BOLTx3 1/2"	16
370	3/8" BOLTx3"	72
372	1" WASHER	152
296	1 1/2" WASHER	24
371	3/8" NYLOC NUT	88
729	DECK SCREW	186
731	BUFFER SCREW	34

NOTE-ALL TIMBER IS TO BE TREATED WITH A SUITABLE PRESERVATIVE. (GROSSOTE, DECKING PAINT, ETC)

- ALL FASTENERS ARE CORROSION RESISTANT STAINLESS STEEL.
- ALL EXPOSED BOLTS ARE TO BE RECESSED INTO THE TIMBER BY COUNTER BORING.
- ALL BOLT THREADS ARE TO BE TREATED WITH ANTI-SIZE OR EQUIVALENT LUBRICATING COMPOUND PRIOR TO FASTENING.

-THIS DRAWING IS FOR A PONTOON OF TYPICAL DESIGN. ENGINEERING EVALUATION SHOULD BE PERFORMED FOR THE PONTOONS SUITABILITY FOR EACH PARTICULAR INSTALLATION.

MARINE DOCK SYSTEMS
PTY LTD

4.5m x 1.5m WALKWAY
 3x 650L FLOATS

MARINA WALKWAY
 PONTOON-1365



SCALE	N.T.S.	DRAWING No.
DRAWN	BJM	A4-1365
DATE	22.7.97	REV A

DECK AREA 6.99m²
 APPROX. WEIGHT 410kg